

Tool chest Eurovision - 3 compartments

939/3EV



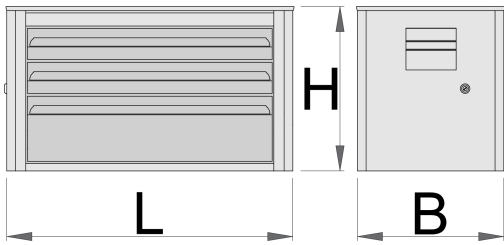
Profiles



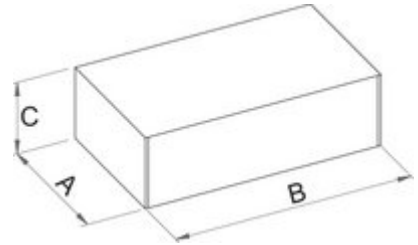
[./eng/support/warranty\).](#)

Product features

- material: premium PLUS sheet metal
- central locking system with a lock and folding key
- lock with key included also foam keyring
- drawers with ball-bearing slides
- the synthetic covering protects drawers and tools from damage
- coated with eco colour of Qualicoat quality standard
- 3 drawers (2 x L 560 x W 275 x H 70mm, 1 x L 560 x W 315 x H 150mm)
- maximum capacity of each drawer: 30kg



	L	B	H	
620556	690	355	394	21600



Retail packaging

	MA	MB	MC	
620556	765	430	460	21670

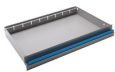
Transport packaging

		TA	TB	TC	
620556	1				

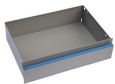
Spare parts



Lock with keys



Small drawer



Big drawer



Ball bearing slide, set of 1 pair



Syntetic covering for drawer D939EV1



Syntetic covering for drawer D939EV2