

# Portable truing stand

1688

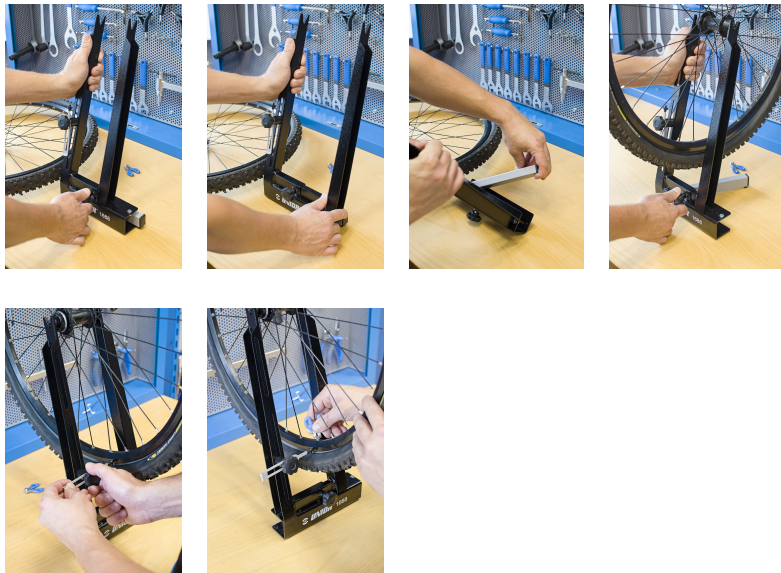


## Usage

---

## Product features

- material: premium flex plus carbon steel
- It is possible to center wheels with dimension from 16 to 29 inch, with or without tire.
- Supports hubs up to 157 mm width.



- This stand is intended especially for the enthusiast. It is very easy to use, light (2.3 kg) and does not take up much space. The left bracket is fixed and welded to the lower profile, while the right bracket is flexible to different all axle widths.

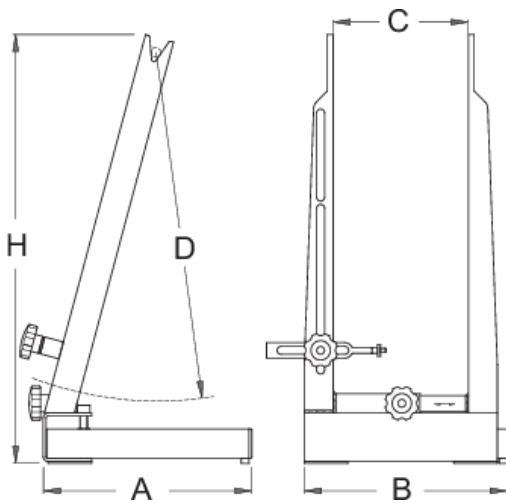
### How to use the tool:

- The stand can be folded by folding the leg to the lower profile.
- The stand can also be mounted on the work bench with screws to increase stability.
- The control sensor is single sided so first the wheel shall be centered on one side, then turned around and centered on the other side.
- The additional function enables true checking of wheel discs.

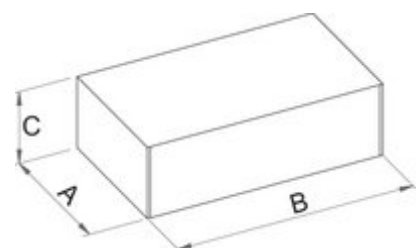
### Profiles



[\(/eng/support/warranty/\)](/eng/support/warranty/)





				A	B	H	
623060	760	90	172	218	217	463	2300




### Retail packaging

	MA	MB	MC	
--	----	----	----	--

	MA	MB	MC	
623060	245	500	95	2500

Transport packaging

		TA	TB	TC	
623060	1	245	500	95	2500