

# Remote control set

1693EL.20



## Product features

- Control your electric repair stand wireless from your bench, without ever touching the buttons on the stand's control panel. Buttons on the electric repair stand remote have the exact same double functionality as buttons on the control panel on the electric repair stand. Most practical functions are to lift/lower the bike to the height of the adjustable limiter or to the floor or hold & release the button at the desired height.

- Remote Control Set 1693EL.20 includes the remote and small circuit board that is super easy to install; installation will only take couple of minutes and doesn't require any pairing or additional setting when installed. Coded remote signal will prevent interfering with other remotely controlled repair stands in the same room.
- Remote Control Set 1693EL.20 is compatible with Unior's Electric Repair Stand 1693EL version 2.0, delivered from April 2021 and onwards.



626223

55

\* Images of products are symbolic. All dimensions are in mm, and weight in grams. All listed dimensions may vary in tolerance.

### Usage (pictures)



### Related products



Electric repair stand 220V



#### Testing the Remote Controller system

- Plug-in the power cord and turn-on the key
- Press and hold the **button Up** on remote controller for about 2 seconds. The stand should start to move upwards and should stop after releasing the **button Up**.
- Short press and release of **button Up**. The stand should start to move upwards until the press of button **Stop** on remote controller before it reaches upper limit position.
- Repeat the same procedure for **button Down** and **Stop** on remote controller.



**Unior d.d.**  
Kovaška cesta 10  
3214 Zreče, Slovenia  
T: +386 3 757 81 00  
sales@unior.com  
www.uniortools.com

909682801

1693EL.20

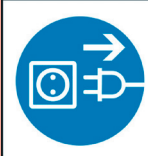
EN

Remote control set

SLO

Set za daljinsko upravljanje

 **UNIOR**<sup>®</sup>  
uniortools.com



**CAUTION**

Turn off and unplug before opening.

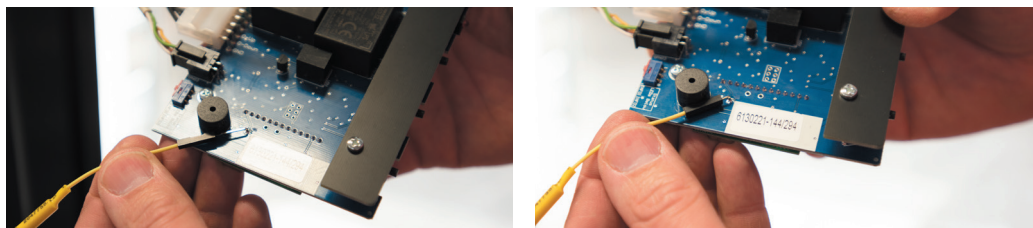
# Turn-off the power key and disconnect power cord



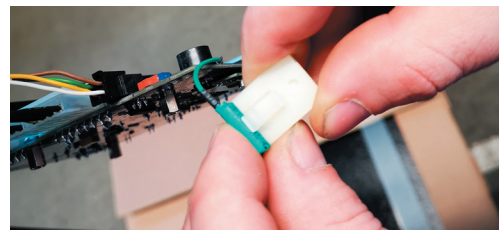
Unscrew and pull out the controller module - remove four screws at the bottom of enclosure (no need to disconnect cables from controller, it can be left out of enclosure by hanging on the cables).



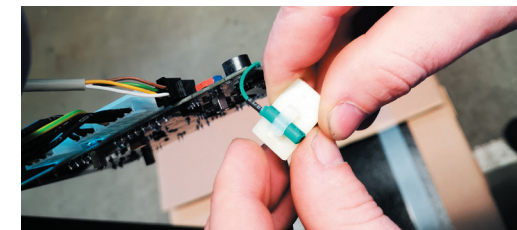
Install remote receiver into the socket connector on the bottom of controller. **Caution!** Remote receiver is electrostatic sensitive device. Avoid touching the contacts of Receiver before it is installed into the socket. Install receiver precisely to predefined location, marked with white rectangle on the controller.



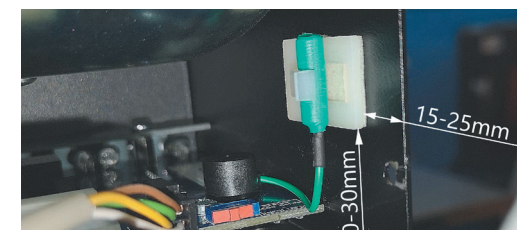
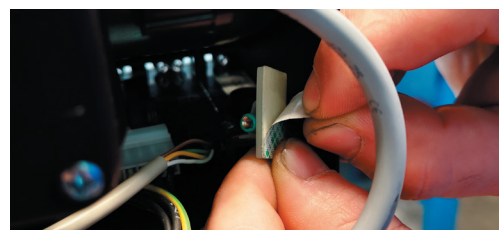
Plug-in the antenna connector into the controller.



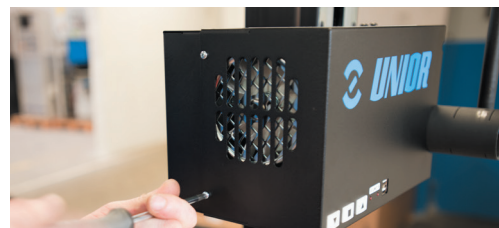
Attach the antenna into the antenna holder.



Install the controller back into the enclosure and fix it with four screws.



Receiving signal from remote controller depends of antenna position so the self-adhesive holder must be attached as presentend on image.



Close the enclosure rear cover and attach it with screws.