



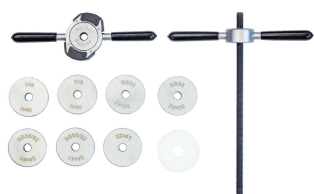


629167

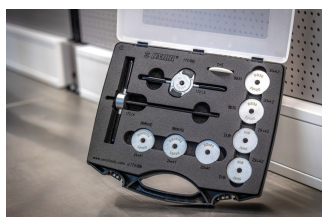
1455

\* Images of products are symbolic. All dimensions are in mm, and weight in grams. All listed dimensions may vary in tolerance.

## Usage (pictures)



## Photo (pictures)



## Spare parts



Bearing press adaptor



Bearing press protector



Quick slide handle for 1721



Handle with threaded rod for bearing press kit 1721



**Unior d.d.**  
Kovaška cesta 10  
3214 Zreče, Slovenia  
T: +386 3 757 81 00  
F: +386 3 576 26 43  
sales@unior.com  
www.uniortools.com

90962923

1721, 1721BB

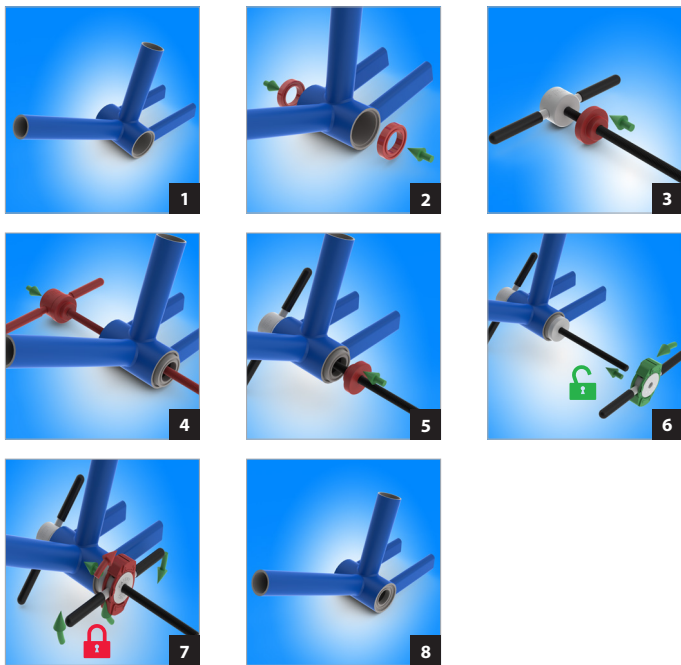
EN

Universal bearing press set

SLO

Set za prešanje ležajev, univerzalni

 **UNIOR**<sup>®</sup>  
www.uniortools.com



- D** Set of two plastic protectors /  
Set dveh zaščitnih plastičnih  
podložk
- B** Second handle with quick release  
mechanism / Drugi ročaj s sistemom  
za hitri pomik
- C** Set of bearing adapters /  
Set adapterjev za ležaja
- A** Threaded rod with first handle /  
Navojna palica z ročajem

## ENG

We determine the correct adapter (C) size by inspecting the bearing we will install. We either search by the bearing standard such as 6802 for example, or we take a vernier and measure inner and outer dimension of the bearing. Adapter 25 x 14, where 25 represents the outer dimension of the bearing and 14 represents the inner dimensions of the bearing, in mm.

Installing bottom bracket bearings such as BB30, can be done both sides at the time, like shown on pictures 4 to 7. Installing other bearings on the frame, one side at the time is suggested.

To protect the frame against scratches, we use one of the two plastic protectors (D) on the opposite side, between the second handle and the frame.

After selecting the bearing adapter and sliding both bearing and adapter onto the threaded rod (A) (pictures 4, 5), we take the second handle with quick release system (B). By locking and unlocking the handle (pictures 6, 7), we enable the handle to quickly slide towards the bearing adapter.

After locking the sliding system, start to turn the handle in the clockwise direction to press the bearing into the frame (picture 7). Make sure both adapter and the bearing are aligned with the frame bearing opening.

## SLO

Določimo pravilno velikost adapterja (C) z ugotovitvijo standarda ležaja ki ga bom montirali. Adapter lahko iščemo po standardu ležaja npr. 6802 ali pa izmerimo zunanji in notranji premer ležaja in najdemo adapter po oznaki npr. 25 x 14, kjer 25 predstavlja zunanji premer ležaja in 14 notranji premer, v mm.

Montaža gonilnega ležaja kot je BB30, se lahko izvede na obeh straneh hrkati z uporabo dveh adapterjev, kot je to prikazano na slikah 4 do 7. Montaža drugih ležajev na okvirju pa se izvede vsaka stran posebej.

Za zaščito okvirja proti odrgrinam, uporabimo enega od plastičnih zaščitnih podložk (D) na nasprotni strani, med ročajem in okvirjem.

Po izbiri primerne adapterja in namestitvi adapterja in ležaja na navojno palico (A) (slike 4, 5), vzamemo drugi ročaj s sistemom za hitri pomik (B). Z zaklepanjem in odklepanjem sistema za hitri pomik, lahko celoten ročaj hitro pomaknemo po navojni palici, bližje adapterju.

Po zaklepu sistema za hitri pomik, pričnemo z vrtenjem ročaja v smeri urinega kazalca in s tem pričnemo s stiskanjem ležaja v okvir (slika 7). Pozorni bodite da sta tako adapter kot ležaj poravnana z odprtino v okvirju.