

WALL PLUG BASE



5458E



5459E



5456 AE - 5458 AE

Polyamide 6 support for cable ties.

Available in 2 heights, in black and white colours, with or without lips; grey colour available on request.

Fixing with hammer-in anchor.

TECHNICAL DATA

Raw material:

Halogen-free.

Humidity absorption:

Working temperature:

Min tightening temperature:

Flammability rating:

Resistance to external agents:

polyamide 6.

3% [at 50% relative humidity].

-10°C ÷ 65°C.

-5°C.

UL 94 class V2.

high resistance to aromatic solvents, oils, greases, oil derivatives, good resistance to bases, limited resistance to acids; not resistant to phenols and to chloride solvents.

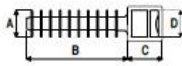
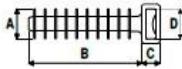
APPLICATIONS

- ▶ Fixing of cables and pipes on solid materials (concrete, solid brick, etc.) in civil and industrial installations.
- ▶ For cable ties up to 9 mm width.

APPROVALS/CERTIFICATIONS

Compliant with norm CEI EN 62275.

Halogen free



WALLPLUG BASE

on request:

Code	Code	∅ Hole	Dimensions (mm)				Tensile strength		Pack	Carton
Black	White	(mm)	A	B	C	D	(kg)	(N)	pcs.	pcs.
5456 AE	5456 AWE	6	7,8	30,7	6,3	9,6	55,08	540	100	5.000
5458E	5458 WE	8	10	37	6,5	9,7	55,08	540	100	5.000
5458 AE	-	8	10	37	6,5	9,7	55,08	540	100	5.000
5459E	-	8	10	37	13	9,7	55,08	540	100	5.000