

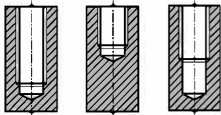
M ISO Metric coarse threads DIN 13

- Metrisches ISO-Gewinde DIN 13
- ISO MÉTRIQUE DIN13
- ISO Metrico passo grosso DIN 13

► For using multi-purpose and correct thread profiles & long tool life due to special tap geometry. YG-1 company has a patent.

► Für vielfältigen Einsatz, genaue Gewindeprofile und lange Standzeitendank einer besonderen Schneidengeometrie. Von YG-1 patentiert.

Hole type
2.5×D



Materia groups
MU

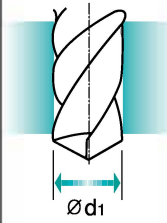
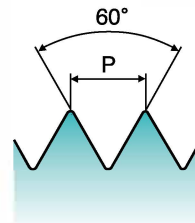
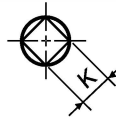
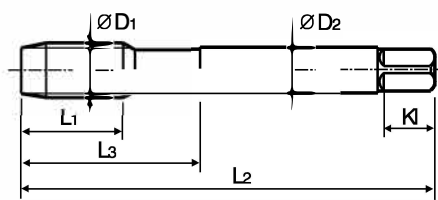
HSS-E

DIN 371/376

6H



Machine taps
Maschinengewindebohrer



Unit : mm

| SIZE ØD1 | Pitch P | EDP No. | | | Thread Length L1 | Overall Length L2 | Neck Length L3 | Shank Diameter ØD2 | Square Size K | Square Length KI | No. of Flute Z | Tapping Drill Diameter Ød1 |
|-------------|------------|----------|----------|----------|---------------------|----------------------|-------------------|-----------------------|------------------|---------------------|-------------------|-------------------------------|
| | | Vap | Bright | TiN | | | | | | | | |
| M2 × 0.4 | | TB804136 | TC804136 | TD804136 | 8 | 45 | 13 | 2.8 | 2.1 | 5 | 3 | 1.6 |
| M2.2 × 0.45 | | TB804156 | TC804156 | TD804156 | 8 | 45 | 13 | 2.8 | 2.1 | 5 | 3 | 1.75 |
| M2.3 × 0.4 | | TB804196 | TC804196 | TD804196 | 8 | 45 | 13 | 2.8 | 2.1 | 5 | 3 | 1.9 |
| M2.5 × 0.45 | | TB804176 | TC804176 | TD804176 | 9 | 50 | 15 | 2.8 | 2.1 | 5 | 3 | 2.05 |
| M2.6 × 0.45 | | TB804496 | TC804496 | TD804496 | 9 | 50 | 15 | 2.8 | 2.1 | 5 | 3 | 2.1 |
| M3 × 0.5 | | TB804206 | TC804206 | TD804206 | 6 | 56 | 18 | 3.5 | 2.7 | 6 | 3 | 2.5 |
| M3.5 × 0.6 | | TB804226 | TC804226 | TD804226 | 7 | 56 | 20 | 4 | 3 | 6 | 3 | 2.9 |
| M4 × 0.7 | | TB804246 | TC804246 | TD804246 | 7 | 63 | 21 | 4.5 | 3.4 | 6 | 3 | 3.3 |
| M4.5 × 0.75 | | TB804266 | TC804266 | TD804266 | 8 | 70 | 25 | 6 | 4.9 | 8 | 3 | 3.7 |
| M5 × 0.8 | | TB804286 | TC804286 | TD804286 | 8 | 70 | 25 | 6 | 4.9 | 8 | 3 | 4.2 |
| M6 × 1 | | TB804316 | TC804316 | TD804316 | 10 | 80 | 30 | 6 | 4.9 | 8 | 3 | 5 |
| M7 × 1 | | TB804346 | TC804346 | TD804346 | 10 | 80 | 30 | 7 | 5.5 | 8 | 3 | 6 |
| M8 × 1.25 | | TB804366 | TC804366 | TD804366 | 13 | 90 | 35 | 8 | 6.2 | 9 | 3 | 6.8 |
| M9 × 1.25 | | TB804396 | TC804396 | TD804396 | 13 | 90 | 35 | 9 | 7 | 10 | 3 | 7.8 |
| M10 × 1.5 | | TB804426 | TC804426 | TD804426 | 15 | 100 | 39 | 10 | 8 | 11 | 3 | 8.5 |
| M11 × 1.5 | | TB804466 | TC804466 | TD804466 | 17 | 100 | 40 | 8 | 6.2 | 9 | 3 | 9.5 |
| M12 × 1.75 | | TB804506 | TC804506 | TD804506 | 18 | 110 | 44 | 9 | 7 | 10 | 3 | 10.2 |
| M14 × 2 | | TB804546 | TC804546 | TD804546 | 20 | 110 | 44 | 11 | 9 | 12 | 3 | 12 |
| M16 × 2 | | TB804606 | TC804606 | TD804606 | 20 | 110 | 44 | 12 | 9 | 12 | 3 | 14 |
| M18 × 2.5 | | TB804656 | TC804656 | TD804656 | 25 | 125 | 50 | 14 | 11 | 14 | 4 | 15.5 |
| M20 × 2.5 | | TB804706 | TC804706 | TD804706 | 25 | 140 | 54 | 16 | 12 | 15 | 4 | 17.5 |
| M22 × 2.5 | | TB804746 | TC804746 | TD804746 | 25 | 140 | 54 | 18 | 14.5 | 17 | 4 | 19.5 |
| M24 × 3 | | TB804786 | TC804786 | TD804786 | 30 | 160 | 60 | 18 | 14.5 | 17 | 4 | 21 |
| M27 × 3 | | TB804866 | TC804866 | TD804866 | 30 | 160 | 60 | 20 | 16 | 19 | 4 | 24 |
| M30 × 3.5 | | TB804946 | TC804946 | TD804946 | 35 | 180 | 70 | 22 | 18 | 21 | 4 | 26.5 |

► DIN371 (M2~M10) and DIN376 (M11~M30)

* The other coating(TiCN or TiAlN) is available on your request.

Unit : N/mm²

◎ : Excellent ○ : Good

| | | | | | | | | | | | | | | |
|-----------------|-------------|----------------|-----------------|------------------|------------------|----------------|------------------|---------------|---------------|----------------|----------------|--------------------|-------------------|----------------|
| Steel < 400 | Steel < 700 | Steel < 850 | St. Alloy < 850 | St. Alloy < 1200 | St. Alloy > 1200 | INOX Fre < 850 | INOX Aust. < 850 | INOX < 1000 | GG Cast < 500 | GG Cast < 1000 | GGG Cast < 700 | GGG Cast < 1000 | Ti < 700 | Ti Alloy < 900 |
| ○ | ○ | ○ | ○ | ○ | ○ | ○ | ○ | ○ | ○ | ○ | ○ | ○ | ○ | ○ |
| Ti Alloy ≤ 1300 | Ni < 500 | Ni Alloy < 900 | Ni Alloy ≤ 1400 | Cu < 350 | Cu Alloy Short | Cu Alloy Long | Cu-Al-Fe < 1500 | Al / Mg < 350 | Al Wrought | Al Si < 10% | Al Si > 10% | Plastic Thermosoft | Plastic Thermoset | Plastic FRP |
| ○ | ○ | ○ | ○ | ○ | ○ | ○ | ○ | ○ | ○ | ○ | ○ | ○ | ○ | ○ |

THREAD MILLS

CARBIDE TAPS

PRIME TAPS

COMBO TAPS

SPIRAL FLUTE TAPS

SPIRAL POINT TAPS

STRAIGHT FLUTE TAPS

COLD FORMING TAPS

NUT TAPS

STI TAPS

HAND TAPS

PIPE TAPS

TECHNICAL DATA