



# COMBO TAPS

**TB804** SERIES Vap**TC804** SERIES Bright**TD804** SERIES TIN

CARBIDE

HSS

## M ISO Metric coarse threads DIN 13

Metrisches ISO-Gewinde DIN 13

ISO MÉTRIQUE DIN13

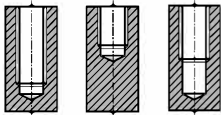
ISO Metrico passo grosso DIN 13

► For using multi-purpose and correct thread profiles &amp; long tool life due to special tap geometry. YG-1 company has a patent.

► Für vielfältigen Einsatz, genaue Gewindeprofile und lange Standzeitendank einer besonderen Schneidengeometrie. Von YG-1 patentiert.

Hole type

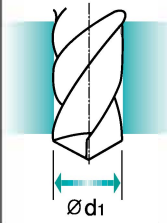
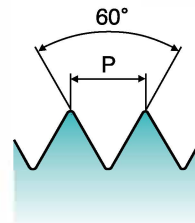
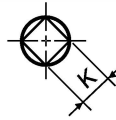
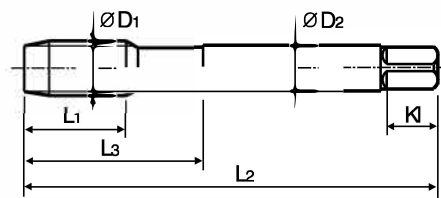
2.5×D



HSS-E

DIN 371/376

6H

Machine taps  
Maschinengewindebohrer

Unit : mm

SIZE	Pitch	EDP No.			Thread Length	Overall Length	Neck Length	Shank Diameter	Square Size	Square Length	No. of Flute	Tapping Drill Diameter
		Vap	Bright	TiN								
ØD1	P	L1	L2	L3	ØD2	K	KI	Z	Ød1			
M2 × 0.4		TB804136	TC804136	TD804136	8	45	13	2.8	2.1	5	3	1.6
M2.2 × 0.45		TB804156	TC804156	TD804156	8	45	13	2.8	2.1	5	3	1.75
M2.3 × 0.4		TB804196	TC804196	TD804196	8	45	13	2.8	2.1	5	3	1.9
M2.5 × 0.45		TB804176	TC804176	TD804176	9	50	15	2.8	2.1	5	3	2.05
M2.6 × 0.45		TB804496	TC804496	TD804496	9	50	15	2.8	2.1	5	3	2.1
M3 × 0.5		TB804206	TC804206	TD804206	6	56	18	3.5	2.7	6	3	2.5
M3.5 × 0.6		TB804226	TC804226	TD804226	7	56	20	4	3	6	3	2.9
M4 × 0.7		TB804246	TC804246	TD804246	7	63	21	4.5	3.4	6	3	3.3
M4.5 × 0.75		TB804266	TC804266	TD804266	8	70	25	6	4.9	8	3	3.7
M5 × 0.8		TB804286	TC804286	TD804286	8	70	25	6	4.9	8	3	4.2
M6 × 1		TB804316	TC804316	TD804316	10	80	30	6	4.9	8	3	5
M7 × 1		TB804346	TC804346	TD804346	10	80	30	7	5.5	8	3	6
M8 × 1.25		TB804366	TC804366	TD804366	13	90	35	8	6.2	9	3	6.8
M9 × 1.25		TB804396	TC804396	TD804396	13	90	35	9	7	10	3	7.8
M10 × 1.5		TB804426	TC804426	TD804426	15	100	39	10	8	11	3	8.5
M11 × 1.5		TB804466	TC804466	TD804466	17	100	40	8	6.2	9	3	9.5
M12 × 1.75		TB804506	TC804506	TD804506	18	110	44	9	7	10	3	10.2
M14 × 2		TB804546	TC804546	TD804546	20	110	44	11	9	12	3	12
M16 × 2		TB804606	TC804606	TD804606	20	110	44	12	9	12	3	14
M18 × 2.5		TB804656	TC804656	TD804656	25	125	50	14	11	14	4	15.5
M20 × 2.5		TB804706	TC804706	TD804706	25	140	54	16	12	15	4	17.5
M22 × 2.5		TB804746	TC804746	TD804746	25	140	54	18	14.5	17	4	19.5
M24 × 3		TB804786	TC804786	TD804786	30	160	60	18	14.5	17	4	21
M27 × 3		TB804866	TC804866	TD804866	30	160	60	20	16	19	4	24
M30 × 3.5		TB804946	TC804946	TD804946	35	180	70	22	18	21	4	26.5

► DIN371 (M2~M10) and DIN376 (M11~M30)

\* The other coating(TiCN or TiAlN) is available on your request.

Unit : N/mm<sup>2</sup>

◎ : Excellent ○ : Good

Steel < 400	Steel < 700	Steel < 850	St. Alloy < 850	St. Alloy < 1200	St. Alloy > 1200	INOX Fre < 850	INOX Aust. < 850	INOX < 1000	GG Cast < 500	GG Cast < 1000	GGG Cast < 700	GGG Cast < 1000	Ti < 700	Ti Alloy < 900
○	○	○	○	○	○	○	○	○	○	○	○	○	○	○
Ti Alloy ≤ 1300	Ni < 500	Ni Alloy < 900	Ni Alloy ≤ 1400	Cu < 350	Cu Alloy Short	Cu Alloy Long	Cu-Al-Fe < 1500	Al / Mg < 350	Al Wrought	Al Si < 10%	Al Si > 10%	Plastic Thermosoft	Plastic Thermoset	Plastic FRP
○	○	○	○	○	○	○	○	○	○	○	○	○	○	○

THREAD MILLS

CARBIDE TAPS

PRIME TAPS

COMBO TAPS

SPIRAL FLUTE TAPS

SPIRAL POINT TAPS

STRAIGHT FLUTE TAPS

COLD FORMING TAPS

NUT TAPS

STI TAPS

HAND TAPS

PIPE TAPS

TECHNICAL DATA